



6647 HOLMES PLACE
MCLEAN, VA 22101





Located in the heart of downtown McLean, just steps from shops and dining, this stunning NEW home, built by Madison Homes, has extensive upgraded features & top quality craftsmanship. Offering over 6,000 Sq. Ft. of living space on 3 levels, the open floorplan is an entertainers dream. Features include 5 bedrooms, each with an en-suite bath, a private main level study, a gourmet kitchen with walk-in pantry, kitchen desk, and mudroom that leads to a spacious side load 2-car garage. The upper level includes 4 bedrooms and 4 baths plus a gorgeous master suite with a sitting room, his and her walk-in closets, and expansive master bathroom. The lower level features a spacious recreation room, media room and 5th bedroom with walk-in closet and full bath.



HOME FACTS & FEATURES

- Subdivision: Bryn Mawr
- Builder: Madison Homes
- Lot Size: 0.32 acre/14,053 sq ft
- New Construction: 2015
- Style: Craftsman
- Construction: Concrete Siding & Stone
- Total Bedrooms: 5
- Total Baths: 5 Full, 1 Powder Room
- Basement: Fully Finished, Walk-up
- Water: Public
- Sewer: Public Sewer
- Heat: Gas, Heat Pump, Forced Air, Zoned (2)
- CAC (Type): Electric, Zoned (2)
- Hot Water: Gas/75 Gallon
- Total Square Footage: Over 6,000 sq ft
- Parking: 2-Car Side Load Garage
- Elementary: Franklin Sherman
- Middle School: Longfellow
- High School: McLean



ANNE DIBENEDETTO
Direct 703-615-1897
Anne@AnneSold.com

OFFERED AT \$1,945,000



This material is based upon information which we consider reliable, but because it has been provided by third parties, we cannot represent that it is accurate or complete, and it should not be relied upon as such. This offering is subject to errors, omissions, changes, including price, or withdrawal without notice.

© 2015 HomeVisit

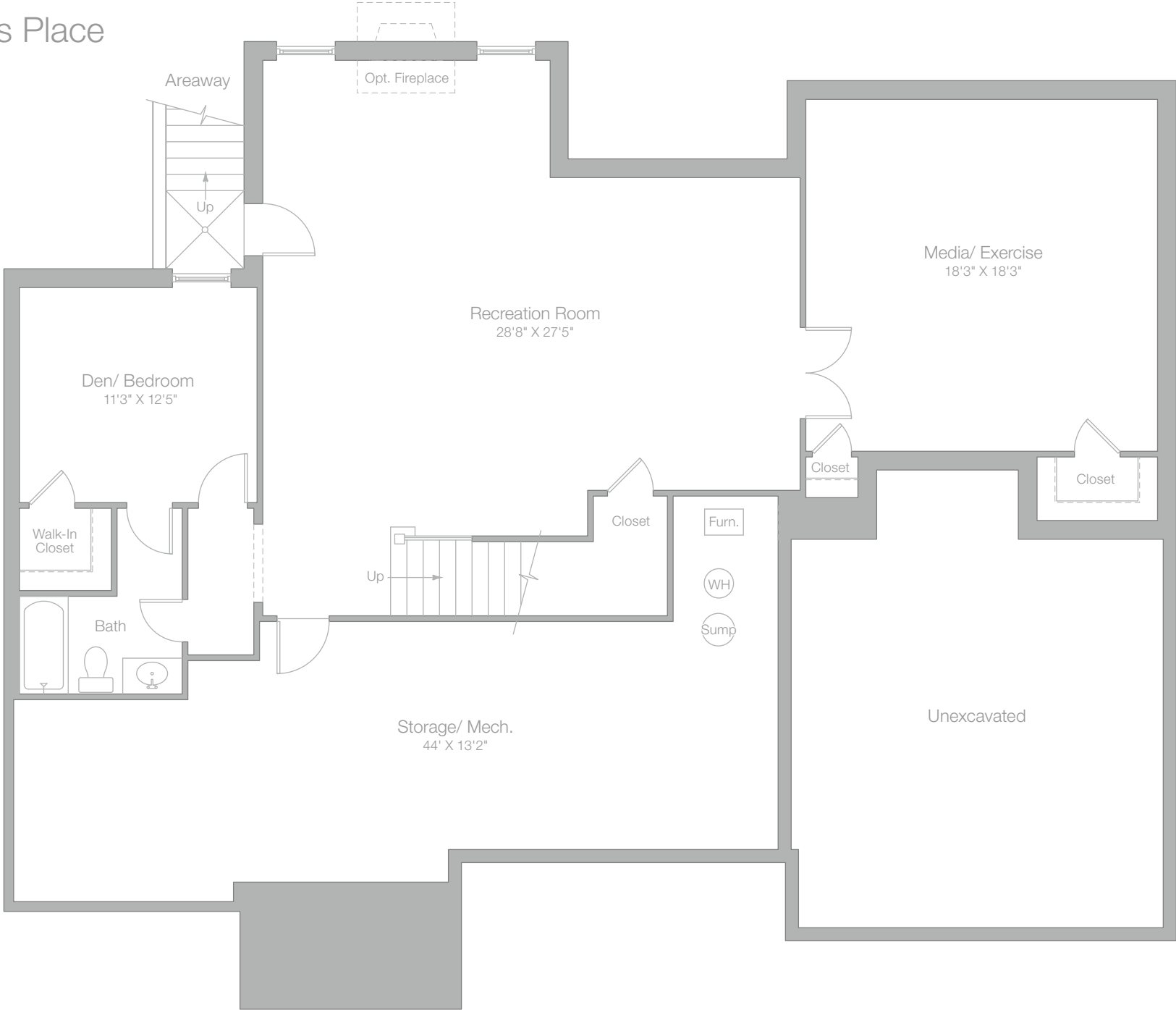


WFP.COM



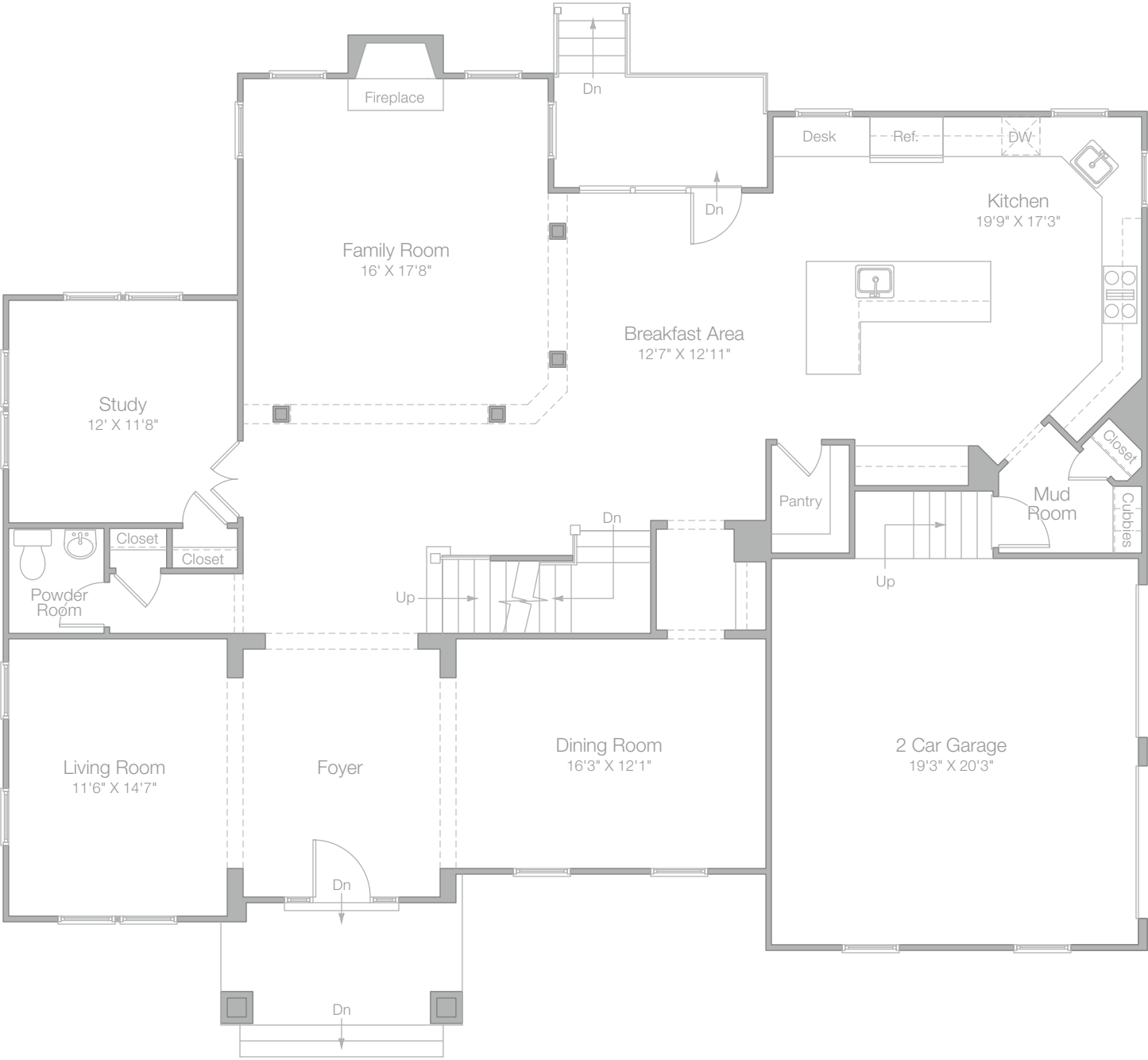
3201 New Mexico Avenue N.W., #220
Washington, DC 20016
202-944-5000

Holmes Place



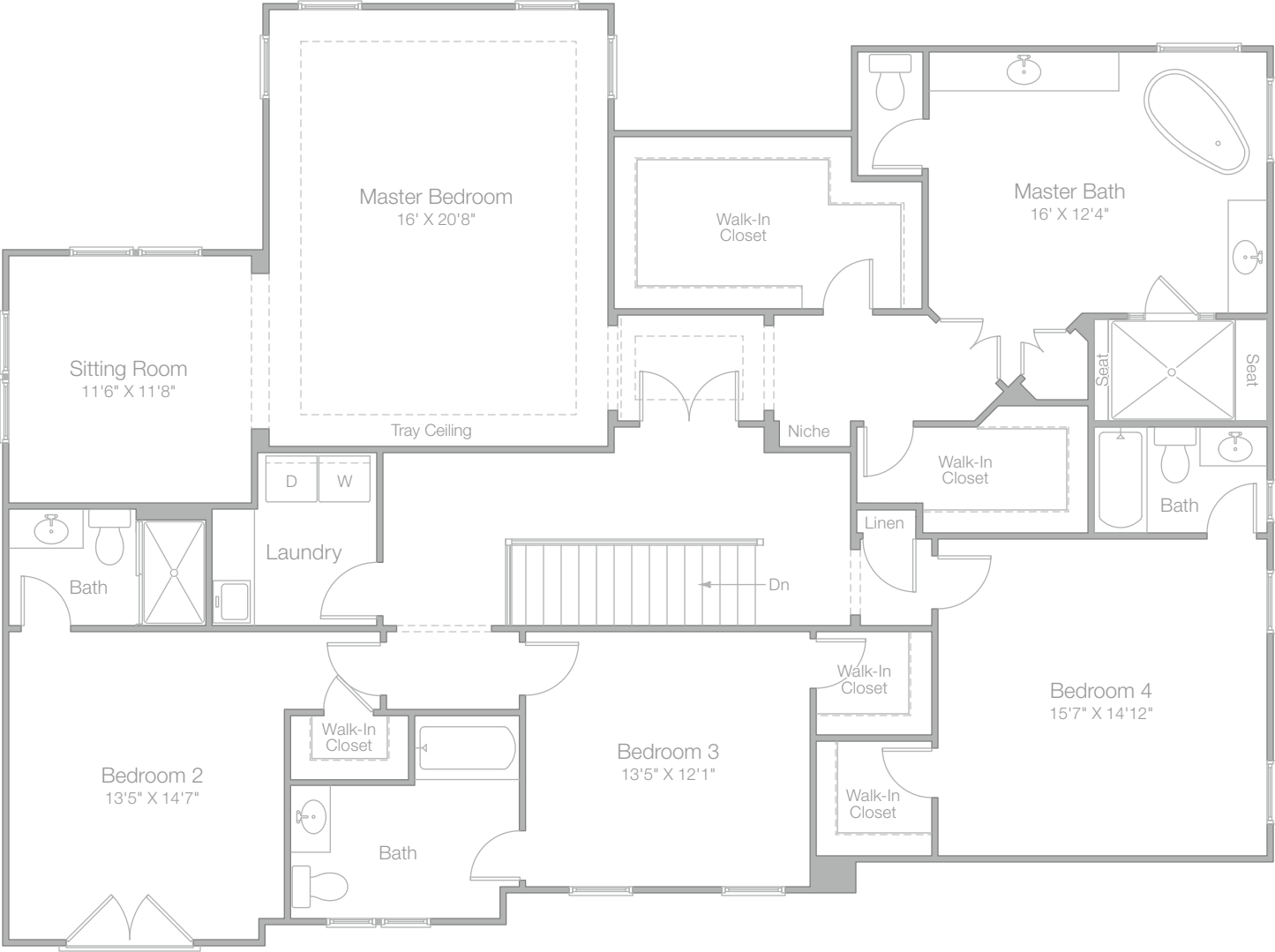
Ground Floor

Holmes Place



First Floor

Holmes Place



Second Floor